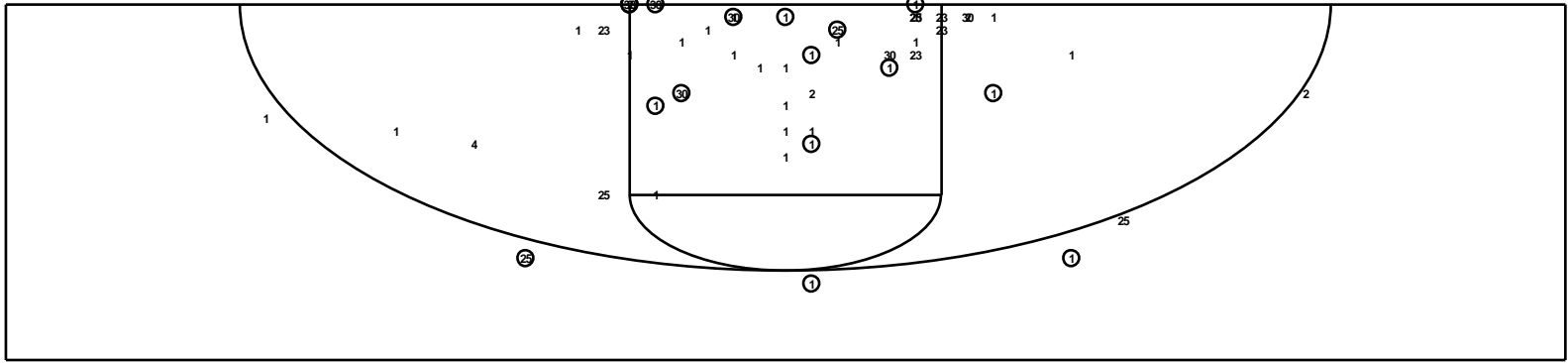
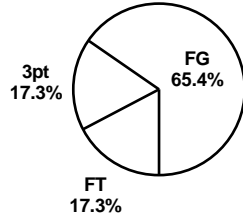


AHSAA State Basketball Championships - TEAM SHOT CHART for the Butler Rebels
 Butler Rebels vs. West End - B'ham Lions
 DATE: 3/4/2004 TIME: 1:30 PM SITE: BJCC Arena

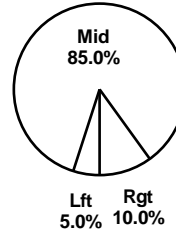


Shot Summary	M/A	%	PTS
3Pt FG	3/6	50.0%	9
2Pt FG	17/52	32.7%	34
Layups - L	0/1	0.0%	0
Layups - R	0/0	0.0%	0
Dunks	3/4	75.0%	6
Putbacks	1/3	33.3%	2
Overall Shooting	20/58	34.5%	43
Free Throws	9/17	52.9%	9
Total Points			52

Scoring Distribution

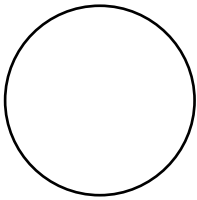


Scoring Locations



By Period	FG	FGA	FG%	3Pt	3PA	3P%	FT	FTA	FT%	PTS	ORB	DRB	TR	PF	AST	TO	BS	ST	P/S
1st Period	3	15	20.0	2	3	66.7	2	4	50.0	10	7	5	12	3	2	1	2	2	0.59
2nd Period	8	19	42.1	1	3	33.3	2	3	66.7	19	7	6	13	2	6	3	2	1	0.95
3rd Period	3	12	25.0	0	0	0.0	1	4	25.0	7	4	3	7	3	1	2	0	1	0.50
4th Period	6	12	50.0	0	0	0.0	4	6	66.7	16	5	7	12	6	3	4	0	4	1.07
Game	20	58	34.5	3	6	50.0	9	17	52.9	52	23	21	44	14	12	10	4	8	0.79

Scoring Breakdown



Scoring Range

